

# TEAC



## SERVICE MANUAL

# DV-L800

DVD Player



### CONTENTS

1 SPECIFICATIONS .....	2
2 EXPLODED VIEWS AND PARTS LIST .....	3
3 PC BOARDS AND PARTS LIST .....	5
4 INCLUDED ACCESSORIES .....	9

### NOTES

- PC boards shown are viewed from parts side.
- The parts with no reference number or no parts number in the exploded views are not supplied.
- As regards the resistors and capacitors, refer to the circuit diagrams contained in this manual.
- ⚠ Parts marked with this sign are safety critical components. They must be replaced with identical components - refer to the appropriate parts list and ensure exact replacement.
- Parts of [ ] mark can be used only with the version designated.  
[US]:U.S.A. [C]:CANADA [E]:EUROPE [UK]:U.K.

# 1 SPECIFICATIONS

## DVD Player

Signal system ..... PAL / NTSC  
 Laser ..... Semiconductor laser, wavelength 650/790 nm  
 Frequency range ..... DVD : 4 Hz to 22 kHz (fs:48kHz)  
   DVD : 4 Hz to 44 kHz (fs:96kHz)  
   CD/VCD : 4 Hz to 20 kHz  
 Signal-to-noise rating (DVD) ..... 105 dB  
 Audio dynamic range (DVD) ..... 92 dB  
 Harmonic distortion (DVD)..... 0.008%  
 Wow and flutter ..... Below measurable level  
   (less than ± 0.001% (W.PEAK))  
 Operating conditions ..... Temperature: 5°C to 35°C  
   Operation status: Horizontal

## Outputs

Video output ..... RCA jack x 1, 1.0 Vp-p, 75 Ω, negative sync.  
 S-video output ..... Mini DIN 4-pin x 1  
   (Y) 1.0 Vp-p, 75 Ω, negative sync., (C) 0.286 Vp-p, 75 Ω  
 Audio output (digital) ..... RCA jack x 1, 1.15 Vp-p, 75 Ω  
   OPTICAL digital jack x 1  
 Audio output (analog)..... RCA jack x 1, 2.0 Vrms (1 kHz, 0 dB)  
 AV connector output ..... SCART jack x 1 (Europe/U.K. model)

## General

Power supply ..... AC 120 V, 60 Hz (U.S.A./Canada model)  
   AC 230 V, 50 Hz (Europe/U.K. model)  
 Power consumption ..... 14 W (U.S.A./Canada model)  
   18 W (STANDBY : 2.5 W) (Europe/U.K. model)  
 Weight..... 3.6 kg  
 External dimensions (W x H x D) ..... 270 x 110 x 295 mm  
 Accessories .....Audio cable (RCA) x 1 stereo  
   Video cable (RCA) x 1  
   Optical cable x 1  
   Owner's manual x 1  
   Remote Control Unit x 1 (U.S.A./Canada model)  
   Batteries (AA, R6, SUM-3) x 2 (U.S.A./Canada model)

- Design and specifications are subject to change without notice.
- Weight and dimensions are approximate.




## Type of Discs That Can be Played on This System

This player can playback discs bearing any of the following marks:

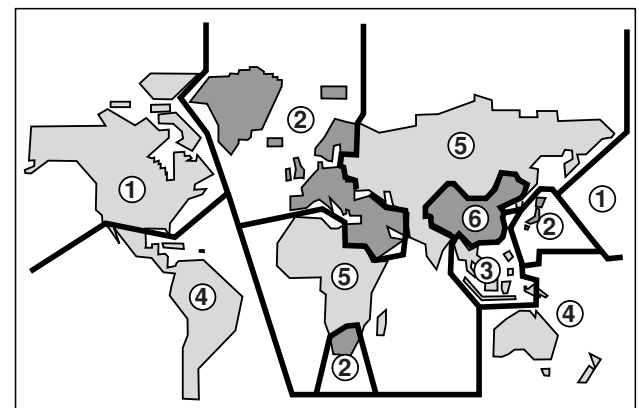
### U.S.A./Canada models

 <b>DVDs</b>	 <b>DVDs</b>	 <b>Audio CDs, MP3</b>
---	--	--

### Europe/U.K. models

 <b>DVDs</b>	 <b>Video CDs</b> (version up to 2.0)	 <b>Audio CDs, MP3</b>
---	--	--

## Region Codes of The World

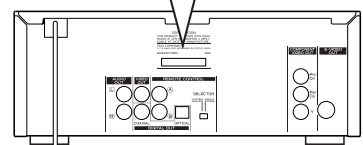


## SAFETY INFORMATION

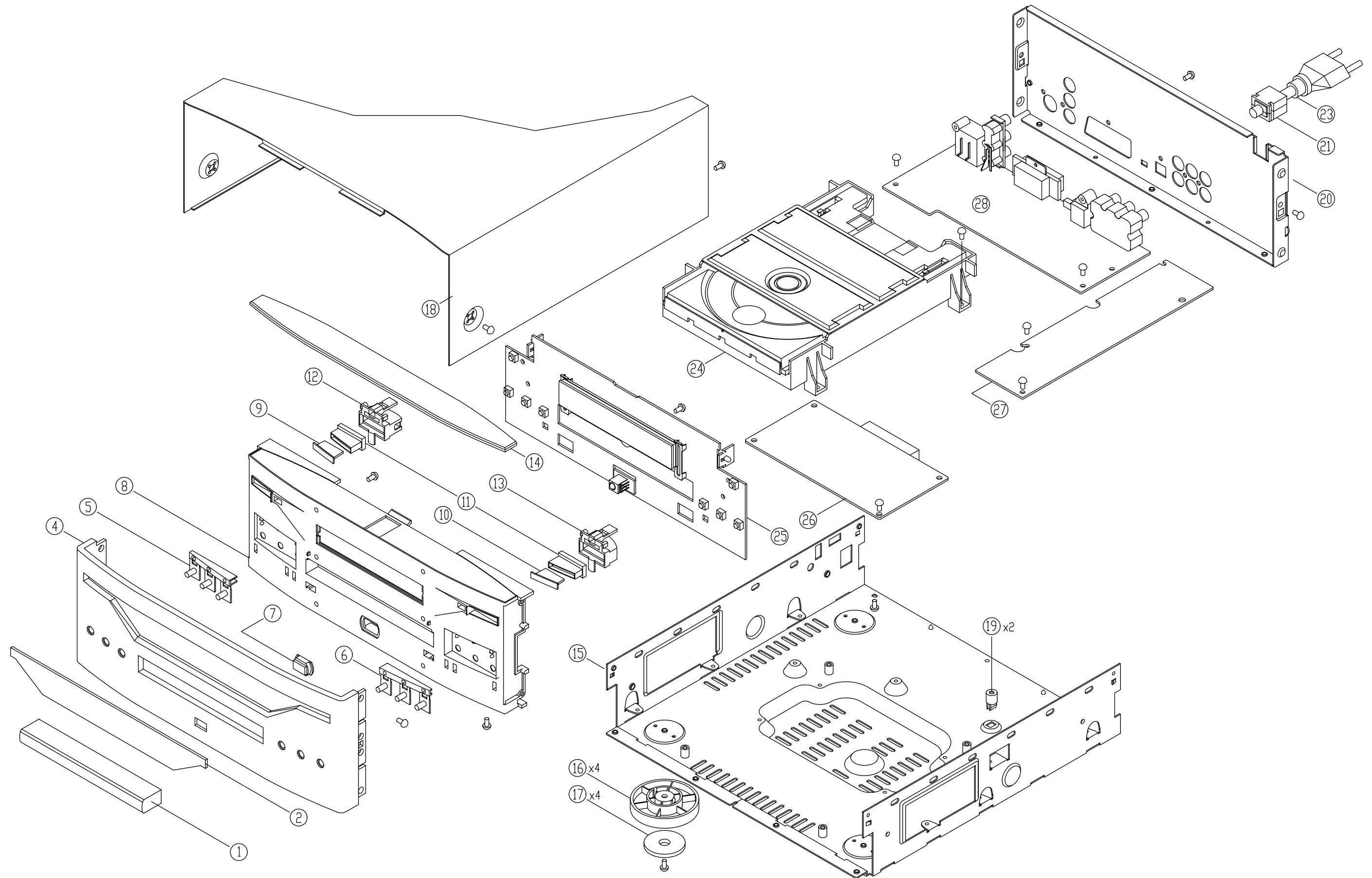
This product has been designed and manufactured according to FDA regulations "title 21, CFR, chapter 1, subchapter J, based on the Radiation Control for Health and Safety Act of 1968", and is classified as a class 1 laser product. There is no hazardous invisible laser radiation during operation because invisible laser radiation emitted inside of this product is completely confined in the protective housings. The label required in this regulation is shown ①.

• **CAUTION**  
 USE OF CONTROLS OR ADJUSTMENT OR PERFORMANCE OF PROCEDURES OTHER THAN THOSE SPECIFIED HEREIN MAY RESULT IN HAZARDOUS RADIATION EXPOSURE.

<b>Optical pickup:</b>	Type : HOP-1200 Manufacturer : Hitachi Media Electronics Co., Ltd. Laser output : Less than 0.5 mW on the objective lens Wavelength : 770 - 810 nm (CD), 635 - 665 nm (DVD)
------------------------	--



## 2 EXPLODED VIEWS AND PARTS LIST



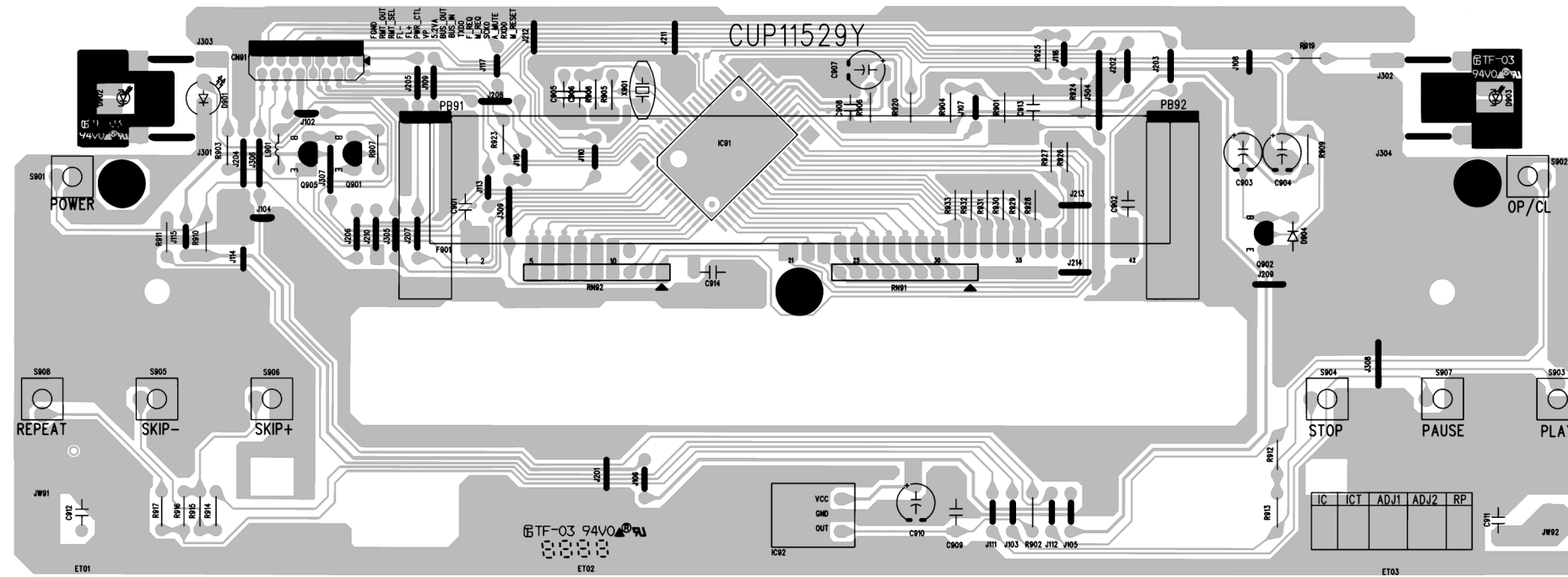
## EXPLODED VIEW LIST

REF. NO.	PARTS NO.	DESCRIPTION	REMARKS
1	9A09611000	DOOR, DVD	CGR1A276M7ZK101
2	9A09619900	WINDOW, FIP	KGU1A285Z
4	9A09620410	PANEL, FRONT (AL) [US, C]	KKM1A123YC35
	9A09620420	PANEL, FRONT (AL) [E, UK]	KKM1A123ZC35
5	9A09617100	KNOB, REPEAT	CBT1A837C22
6	9A09617000	KNOB, BAND	CBT1A836C22
7	9A09594600	WINDOW, SENSOR	CGU1A287A14K101
8	9A09617200	PANEL, MOLD	CGW1A338R6K101
9	9A09616900	KNOB, POWER (DIFFUSION)	CBT1A835RAYK101
10	9A09594200	KNOB, RDS (DIFFUSION)	CBT1A835RAZK101
11	9A09594500	KNOB, POWER (LIGHTING)	CBY1A026
12	9A09594400	KNOB, POWER	CBY1A025RA
13	9A09594300	KNOB, RDS	CBY1A024RA
14	9A09605910	ORNAMENT, TOP [US, C]	KGU1A286Y
	9A09605920	ORNAMENT, TOP [E, UK]	KGU1A286Z
15	9A09617800	CHASSIS, BOTTOM	CUA1A215
16	9A09606300	FOOT	KKL1A047M7G6
17	9A06229300	CUSHION, FOOT	KHG1A039Z
18	9A09595300	TOP CABINET	CKC2B130S35
19	9A06229100	MOUNT, PCB	KHE1A023
20	9A09617410	PANEL, REAR [US, C]	CKF2A237Y
	9A09617420	PANEL, REAR [E, UK]	CKF2A237Z
21	△ 9A06754900	BUSHING, AC CORD	KHR1A028
23	△ 9A07872600	POWER CORD [US, C]	CJA523FBY
	△ 9A07916700	POWER CORD [E]	CJA2B043Z
	△ 9A07916800	POWER CORD [UK]	CJA2E045Z
24	9A09613700	1 DVD MECHANISM (HD3 P/U)	HJDRL-A700HD3
25	9A09577110	FRONT PCB ASSY	COP11529B
26	9A09577410	DVD MAIN PCB ASSY [US, C]	CIP11538ESMD
	9A09577420	DVD MAIN PCB ASSY [E, UK]	CIP11538DSMD
27	9A09617510	SMPS PCB ASSY [US, C]	COP11489BSMPS
	9A09617520	SMPS PCB ASSY [E, UK]	COP11489CSMPS
28	9A09577510	AV PCB ASSY [US, C]	COP11552C
	9A09577520	AV PCB ASSY [E, UK]	COP11552B
	9A09618100	CARD CABLE	CWC1B2A17A260B
	9A09618200	CARD CABLE (SHIELD)	CWC3B2A32A150B6
	9A08038100	RING, FERRITE	KLZ9W001Z
	9A09619100	FERRITE CORE [US, C]	HLZ9Z009Z

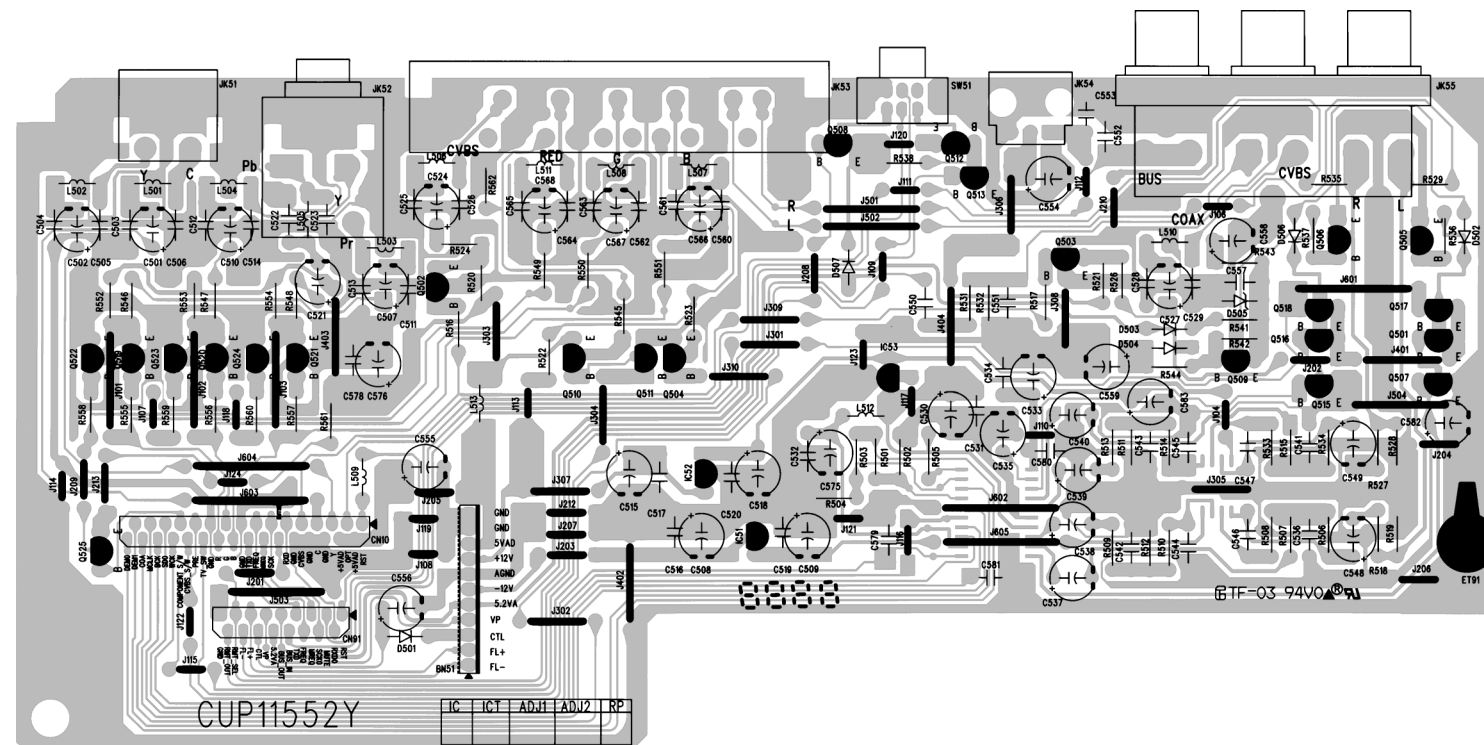




FRONT PCB



AV PCB



**DVD MAIN PCB ASSY**

REF. NO.	PARTS NO.	DESCRIPTION
	9A09577410	DVD MAIN PCB ASSY [US, C]
	9A09577420	DVD MAIN PCB ASSY [E, UK]
	9A09578400	DVD MAIN PCB
CN10	9A09620300	WAFER, CARD CABLE
CN12	9A09256400	40P HEADER
D101	9A09614700	DIODE, SCHOTTKY BARRIER
IC01	9A09615200	IC, ES6028F
IC03	9A09615300	IC, FLASH MEMORY
IC04	9A09619400	IC, BA7665AFS [US, C]
IC05	9A09614800	IC, BA7609F [E, UK]
IC07	9A09615800	IC, 74VHC04MX
IC09	△ 9A09615500	IC, RC1117ST
IC10	9A09615400	IC, 64M SDRAM
IC13	9A09615000	IC, EEPROM (16K)
IC15	9A09615100	IC, BU2098F
IC16	9A09614900	IC, BA7622F [E, UK]
IC17	9A09614900	IC, BA7622F [US, C]
IC19	9A09614900	IC, BA7622F [E, UK]
RN01-RN12	9A09614500	R, ARRAY 33X4
RN14, RN15	9A09614500	R, ARRAY 33X4
X102	9A09614200	CRYSTAL, CHIP 27MHZ

**FRONT PCB ASSY**

REF. NO.	PARTS NO.	DESCRIPTION
	9A09577110	FRONT PCB ASSY
	9A09617900	FRONT PCB
CN91	9A09620200	WAFER, CARD CABLE
D901	9A09344400	LED, YELLOW
D902, D903	9A09563300	LED, BLUE
D904	9A08878200	DIODE, 1SS133T-77
ET01, ET03	9A09608000	PLATE, EARTH
F901	9A09255300	FIP DISPLAY
IC91	9A09582400	IC, MICOM
IC92	9A08563600	SENSOR, REMOCON
L901	9A07886600	COIL, 10UH
PB91, PB92	9A08888700	BRACKET, FLT
Q901	9A08884100	TR, KRA107M
Q902, Q905	9A08878300	TR, KRC107M
RN91, RN92	9A06254900	R, NETWORK SN8X104J
S901-S908	9A07878500	SW, TACT SKHV10910G
X901	9A09619200	CRYSTAL, 4MHZ

**AV PCB ASSY**

REF. NO.	PARTS NO.	DESCRIPTION
	9A09577510	AV PCB ASSY [US, C]
	9A09577520	AV PCB ASSY [E, UK]
	9A09577700	AV PCB
CN10	9A09620300	WAFER, CARD CABLE
CN91	9A09620100	WAFER, CARD CABLE
D501-D504	9A08878200	DIODE, 1SS133T-77
D505	9A08954300	DIODE, ZENER MTZJ4.7BT
D506, D507	9A08878200	DIODE, 1SS133T-77
IC51	△ 9A09619700	IC, KA79L08AZT
IC52	△ 9A09619600	IC, KA78L08AZT
IC53	△ 9A09570100	IC, KA78L05AZT
IC54	9A09619500	IC, CS4391KS
IC55	9A08163400	IC, NJM2068MD
JK51	9A09601900	JACK, S-VIDEO 1P
JK52	9A09256100	JACK, IN/OUT
JK53	9A09256100	JACK, IN/OUT [E, UK]
JK54	9A08126500	MODULE, OPTICAL
JK55	9A09617300	JACK, PIN BOARD 6P
L501, L502	9A09613900	COIL, 1.8UH
L503-L505	9A08148000	COIL, 2.7UH
L506	9A09613900	COIL, 1.8UH
L507, L508	9A09613900	COIL, 1.8UH [E, UK]
L509	9A07886600	COIL, 10UH
L510	9A09613900	COIL, 1.8UH
L512, L513	9A07886600	COIL, 10UH
Q501	9A08884100	TR, KRA107M
Q502, Q503	9A07888100	TR, KTA1266YT
Q504	9A08878300	TR, KRC107M
Q505, Q506	9A07888500	TR, KTD1302T
Q507	9A08878300	TR, KRC107M
Q508	9A08884100	TR, KRA107M
Q509	9A09041500	TR, KSA916YT
Q510	9A07888100	TR, KTA1266YT
Q511	9A08878300	TR, KRC107M
Q512	9A08884100	TR, KRA107M
Q513, Q515	9A08878300	TR, KRC107M
Q516-Q518	9A08884100	TR, KRA107M
Q519-Q521	9A01387400	TR, KSA733CYT [E, UK]
Q522-Q524	9A07888500	TR, KTD1302T [E, UK]
Q525	9A08884100	TR, KRA107M [E, UK]
SW51	9A06675300	SW, SLIDE

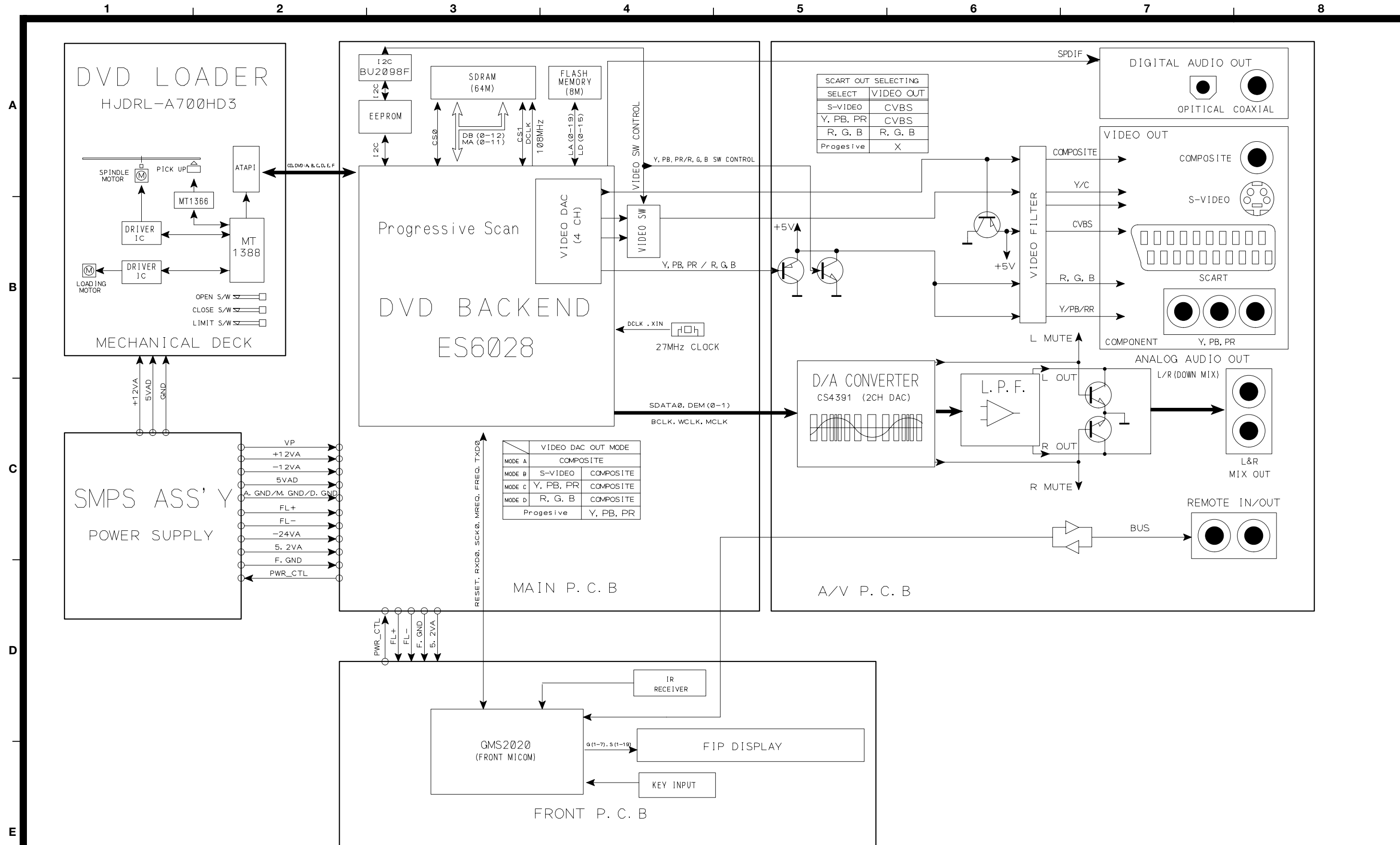


## 4 INCLUDED ACCESSORIES

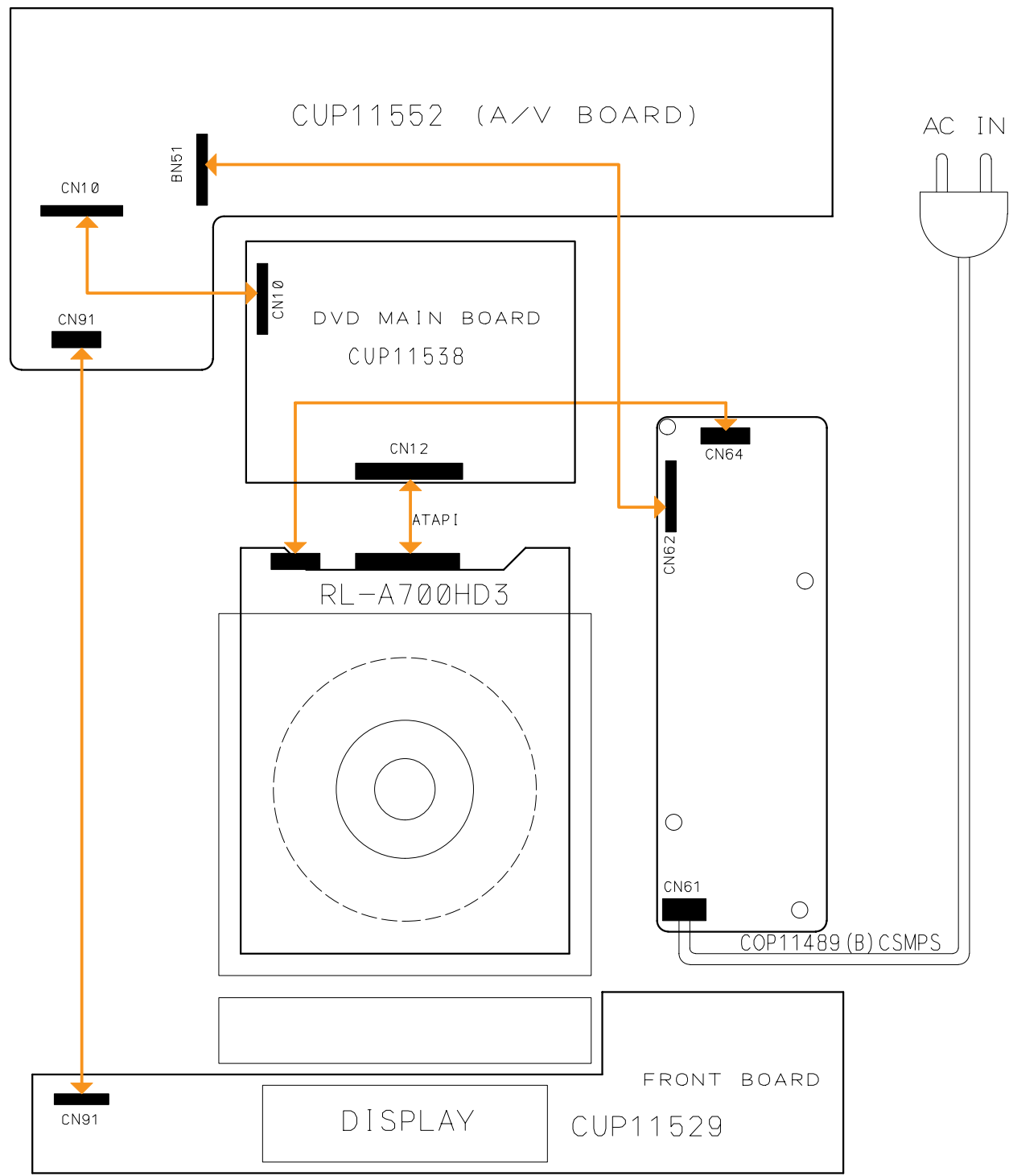
### INCLUDED ACCESSORIES

REF. NO.	PARTS NO.	DESCRIPTION	REMARKS
	9A09477900	OWNER'S MANUAL, EFS [US, C]	CQX1A802Z
	9A09478000	OWNER'S MANUAL, GSN [E]	CQX1A792Y
	9A09501400	OWNER'S MANUAL, EFI [E, UK]	CQX1A792Z
	9A09616800	REMOCON ASSY [US, C]	CARTDVL800TC
	9A09055200	BATTERY [US, C]	HABAAM1.5V
	9A09607500	CORD, PIN	CJS4M027Z
	9A09607600	CORD, PIN	CJS4N014Z
	9A09611300	CORD, PIN (1P)	CJS4M023Z
	9A09619000	OPTICAL CABLE	HJS8H003Z

# TEAC BLOCK DIAGRAM DV-L800



A  
B  
C  
D  
E



PIN DISCRPTION

CN91		CN10		CN12		CN62, BN51	
1	RESET	1	RESET	1	RESET	1	FL-
2	RXD0	2	5VAD	2	GND	2	FL+
3	A_MUTE	3	OPTICAL	3	D7	3	PWR_CTL
4	SCK0	4	5VAD	4	D8	4	VP
5	M_REQ	5	Y	5	D6	5	5.2VA
6	F_REQ	6	GND	6	D9	6	12V
7	TXD0	7	C	7	D5	7	GND
8	BUS_IN	8	GND	8	D10	8	12V
9	BUS_OUT	9	CVBS	9	D4	9	5VAD
10	5.2VA	10	GND	10	D11	10	GND
11	VP	11	RXD0	11	D3	11	GND
12	PWR_CTL	12	A MUTE	12	D12		
13	FL+	13	SCK0	13	D2		
14	FL-	14	M REQ	14	D13		
15	RMT_SEL	15	F REQ	15	D1		
16	RMT_OUT	16	TXD0	16	D14		
17	GND	17	GND	17	D0		
		18	BULE	18	D15		
		19	GREEN	19	GND		
		20	RED	20	KEY		
		21	GND	21	DRQ		
		22	TVSW	22	GND		
		23	PRE	23	IOW		
		24	CVBS CONTROL	24	GND		
		25	SCART/COMPO SW	25	IOR		
		26	WCK	26	GND		
		27	SD0	27	IOCHROY		
		28	BCK	28	BALE		
		29	MCK	29	DACK		
		30	COAXIAL	30	GND		
		31	DEM1	31	IRQ14		
		32	DEM0	32	IOCS16		
				33	A1		
				34	RESERVED		
				35	A0		
				36	A2		
				37	CS0		
				38	CS1		
				39	ACTIVITY		
				40	GND		

CN64	
1	12V
2	GND
3	GND
4	5VAD

# TEAC SCHEMATIC DIAGRAM DV-L800 DVD MPEG PCB

1 2 3 4 5 6 7 8

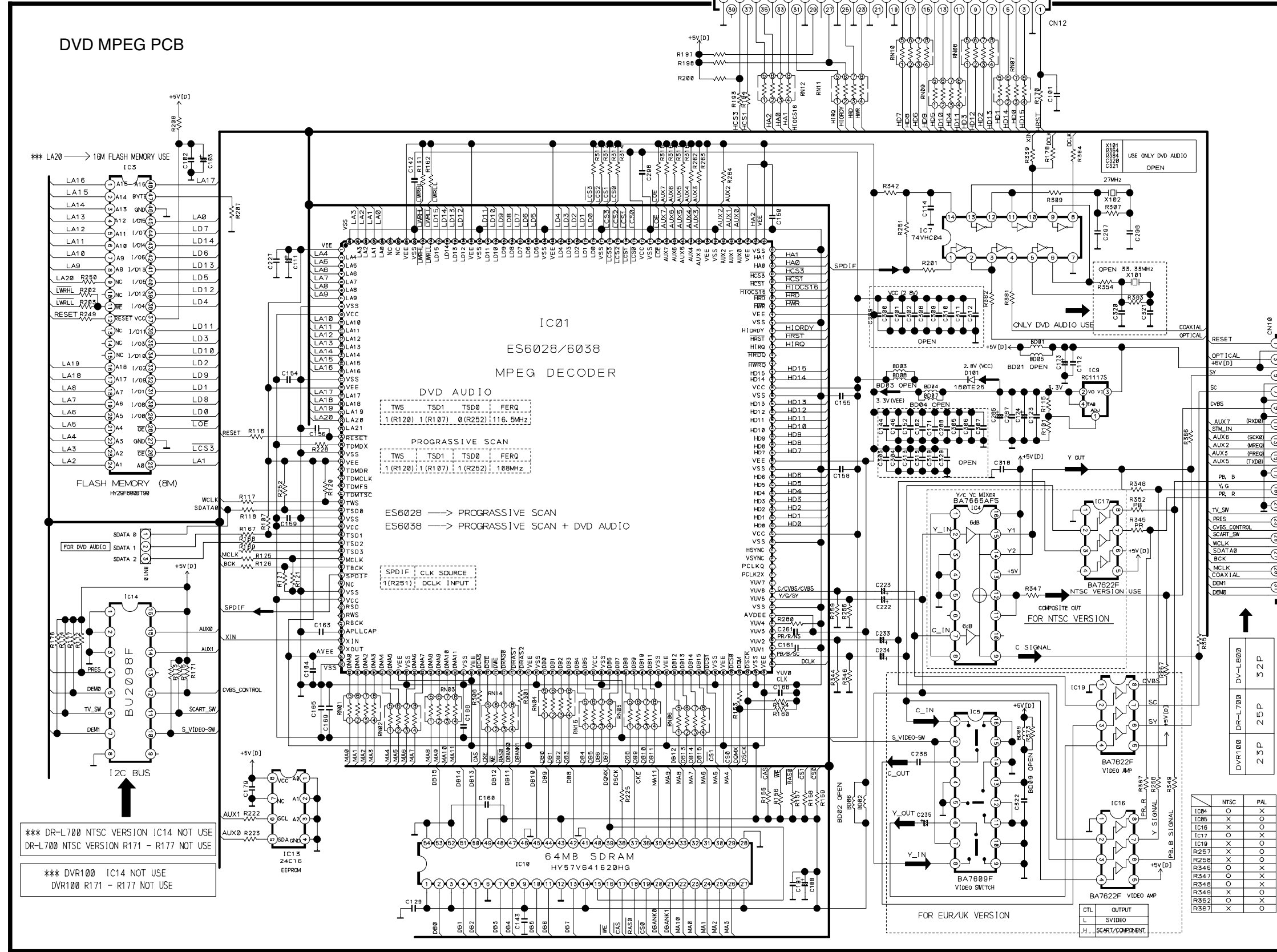
A

B

C

D

E



R101	360	R283	NS	C185	
R102	NS	R301	33	C165	0.1
R103	NS	R306	33	C166	0.1
R104	NS	R307	100K	C168	0.1
R105	NS	R309	330	C175	0.1
R106	NS	R311	4.7K	C179	0.1
R107	4.7K	R312	4.7K	C188	100/6.3
R108	NS	R313	4.7K	C191	NS
R109	NS	R314	4.7K	C222	10/50
R110	NS	R315	4.7K	C235	10/50
R111	NS	R316	4.7K	C228	0.1
R112	NS	R317	4.7K	C235	10/50
R113	NS	R318	4.7K	C234	10/50
R114	NS	R320	NS	C235	10/50
R115	220	R321	NS	C236	0.1
R116	1K	R322	NS	C237	0.1
R117	10	R323	NS	C248	47/6.3
R118	10	R339	120	C261	0.1
R119	NS	R344	68	C285	100/6.3
R120	4.7K	R345	75	C286	NS
R121	47K	R346	68	C287	0.1
R122	NS	R347	75	C286	0.1
R123	NS	R348	75	C287	27P
R124	NS	R349	0	C288	27P
R125	10	R351	82	C316	0.1
R126	10	R352	75	C317	47/6.3
R127	47K	R354	330	C318	0.1
R153	33	R366	75	C320	NS
R154	47K	R367	0	C321	NS
R155	4.7K	R373	0	C322	0.1
R156	4.7K	R374	4.7K	C323	0.1
R157	4.7K	R375	4.7K	C324	100/6.3
R158	4.7K	R381	33	D101	60E/25
R159	4.7K	R382	33	BD01	NS
R160	47K	RN01	33K	BD02	NS
R161	4.7K	RN02	33K	BD03	NS
R162	4.7K	RN03	33K	BD04	NS
R170	33	RN04	33K	BD05	0
R171	10K	RN05	33K	BD06	0
R172	1K	RN06	33K	BD07	0
R173	10K	RN07	33K	BD08	0
R174	10K	RN08	33K	BD09	NS
R175	10K	RN09	33K		
R176	10K	RN10	33K		
R177	10K	RN11	33K		
R178	120	RN12	33K		
R193	33	RN13	33K		
R194	33	RN15	33K		
R197	4.7K				
R198	4.7K	C101	0.1		
R200	4.7K	C102	0.1		
R201	33	C103	47/6.3		
R205	10	C111	47/6.3		
R207	NS	C112	0.1		
R222	100	C114	0.1		
R223	100	C123	0.1		
R225	100	C124	100/6.3		
R228	4.7K	C129	0.1		
R249	1K	C130	0.1		
R251	4.7K	C143	0.1		
R252	75	C145	0.1		
R256	68	C150	0.1		
R257	0	C152	0.1		
R258	0	C155	0.1		
R259	68	C156	0.1		
R262	4.7K	C158	0.1		
R263	4.7K	C160	0.1		
R264	4.7K	C161	0.1		
R278	NS	C163	150p		
R280	270	C164	0.1		

CTL	OUTPUT
L	SVIDEO
H	SCART/COMPONENT

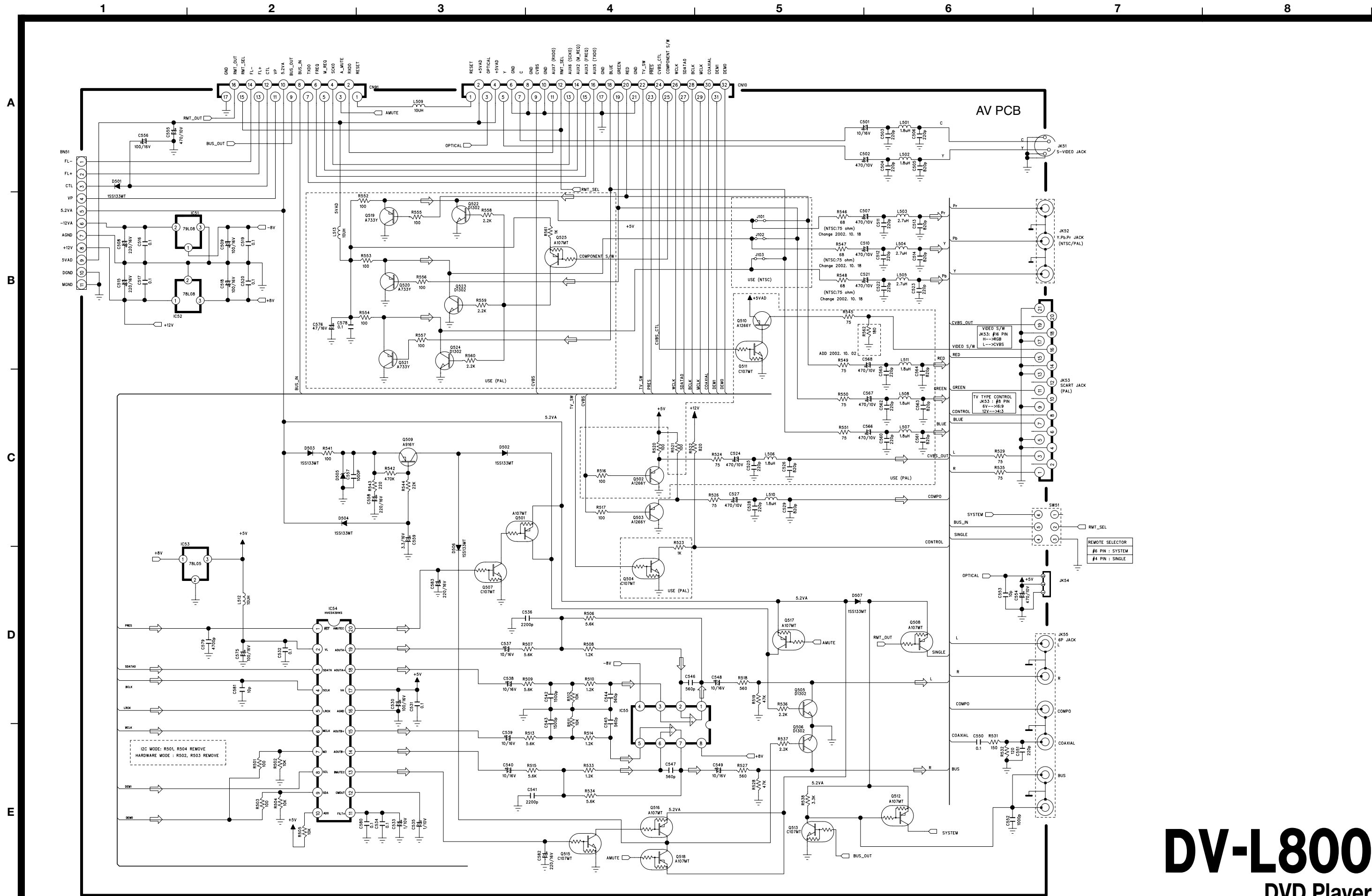
IC#	NTSC	PAL
IC04	O	X
IC06	X	X
IC16	X	X
IC17	O	X
IC19	X	O
R257	X	O
R258	X	X
R347	O	X
R348	O	X
R349	X	O
R352	O	X
R367	X	O

# DV-L800

## DVD Player

1st Issue; November 2002

# TEAC SCHEMATIC DIAGRAM DV-L800 AV PCB

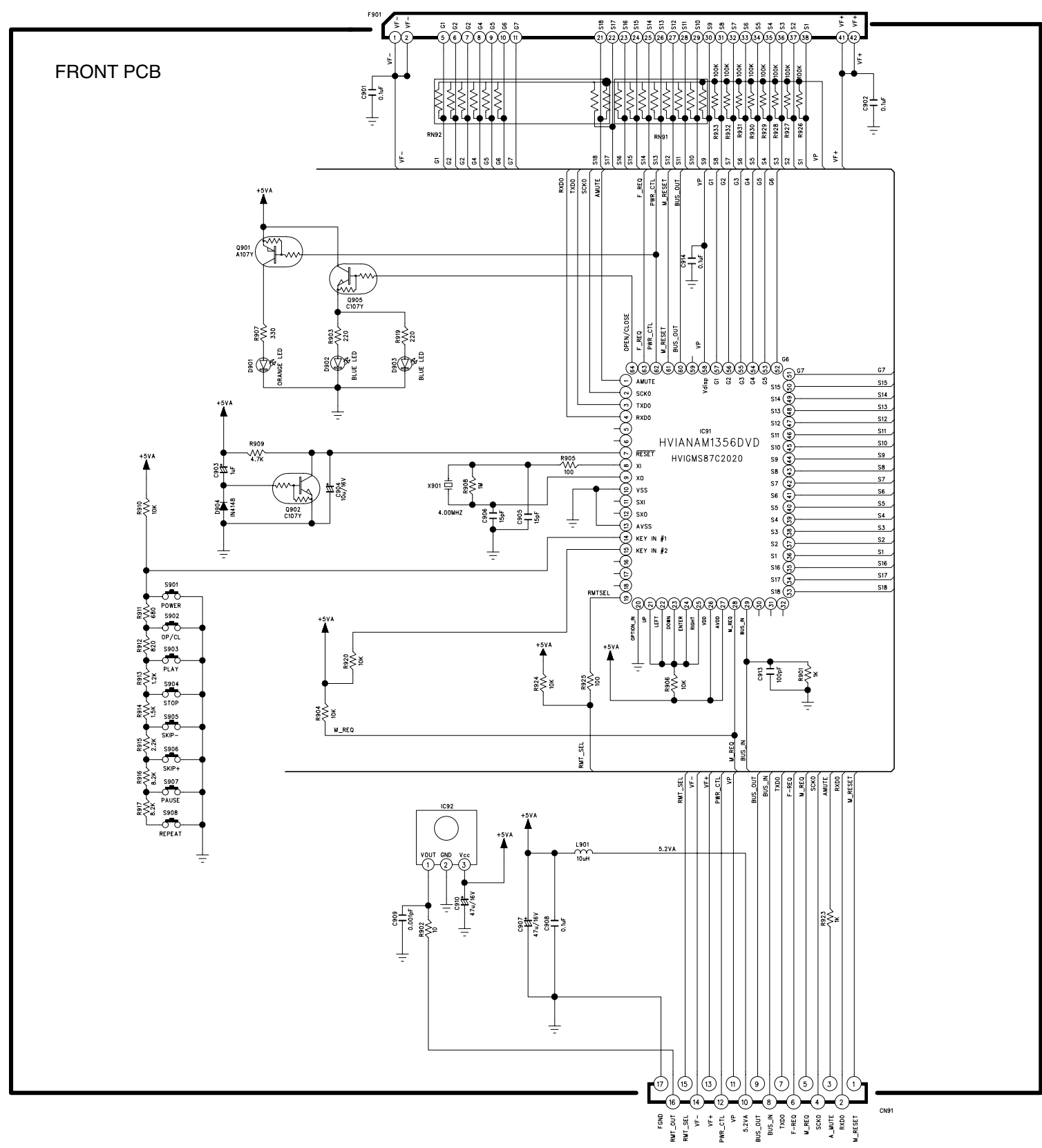


**DV-L800**  
**DVD Player**  
 1 st Issue; November 2002

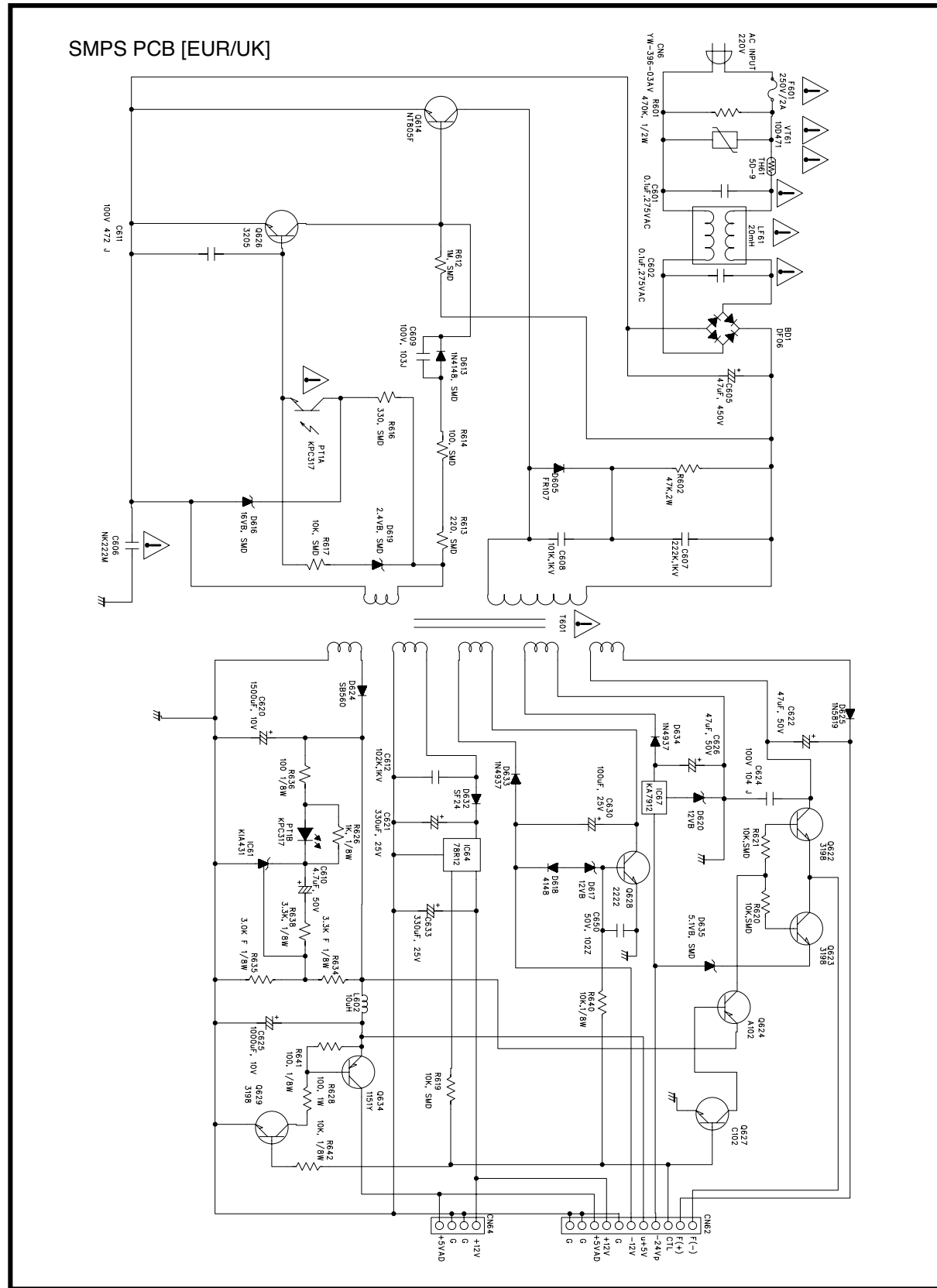
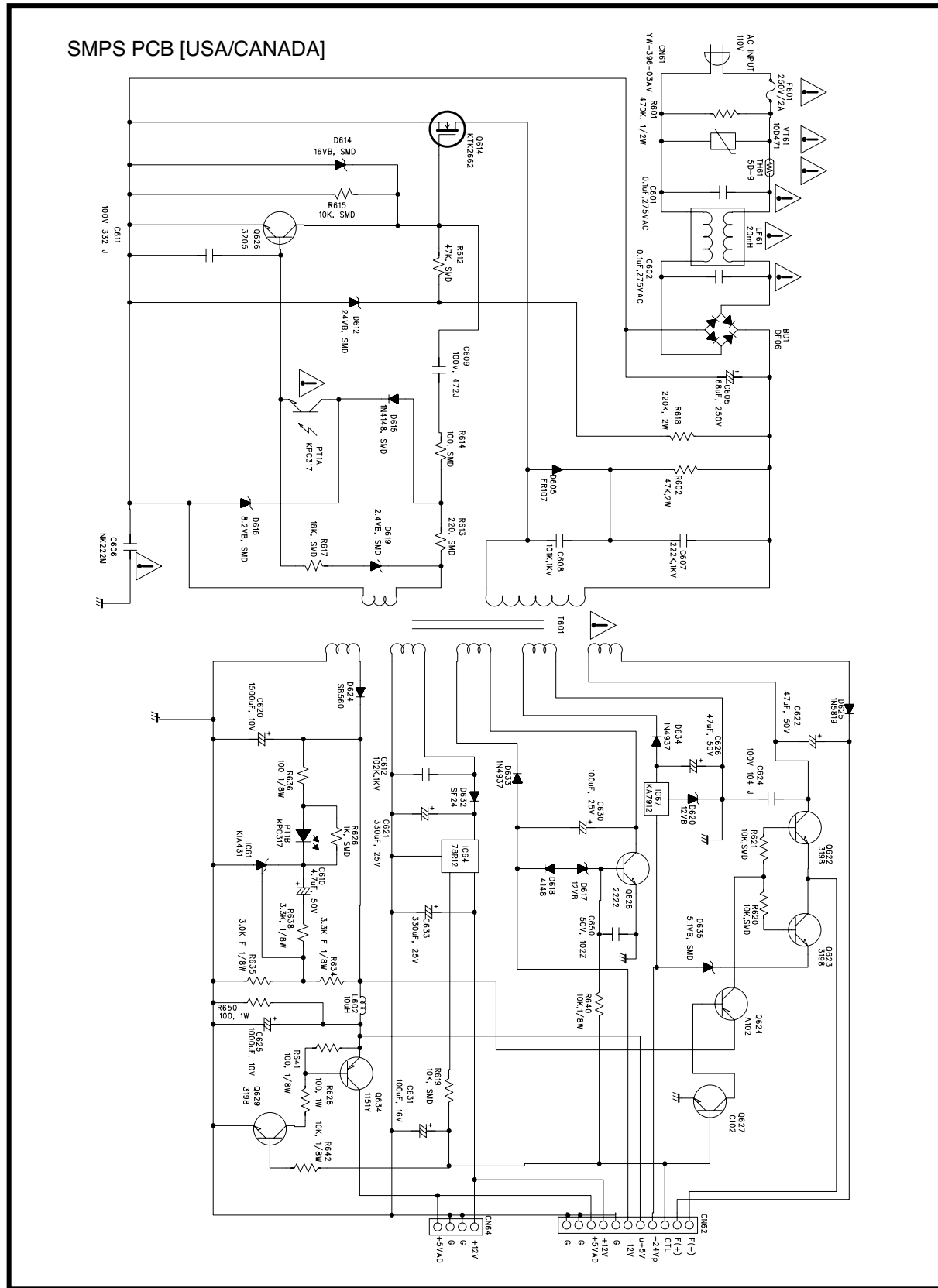
# TEAC SCHEMATIC DIAGRAM DV-L800 FRONT PCB

1 2 3 4 5 6 7 8

A  
B  
C  
D  
E



A  
B  
C  
D  
E



**INSTRUCTIONS FOR SERVICE PERSONNEL**  
**BEFORE RETURNING APPLIANCE TO THE CUSTOMER, MAKE LEAKAGE-CURRENT OR RESISTANCE MEASUREMENTS TO DETERMINE THAT EXPOSED PARTS ARE ACCEPTABLY INSULATED FROM THE SUPPLY CIRCUIT.**

**NOTES:**  
 ⚠️ Parts marked with this sign are safety critical components. They must always be replaced with identical components—refer to the appropriate parts list and ensure exact replacement.